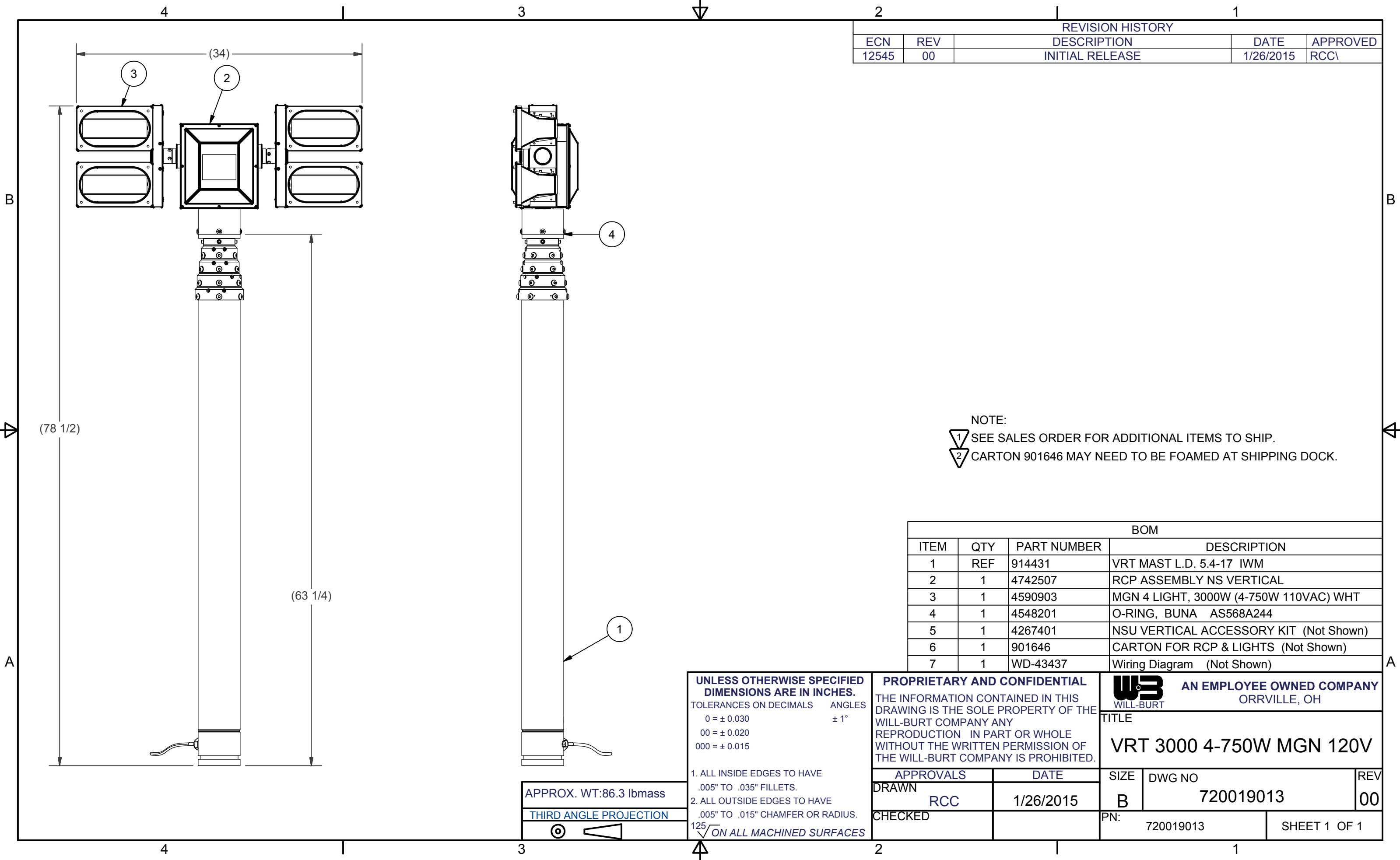


REVISION HISTORY				
ECN	REV	DESCRIPTION	DATE	APPROVED
12545	00	INITIAL RELEASE	1/26/2015	RCC\



NOTE:
 1 SEE SALES ORDER FOR ADDITIONAL ITEMS TO SHIP.
 2 CARTON 901646 MAY NEED TO BE FOAMED AT SHIPPING DOCK.

BOM			
ITEM	QTY	PART NUMBER	DESCRIPTION
1	REF	914431	VRT MAST L.D. 5.4-17 IWM
2	1	4742507	RCP ASSEMBLY NS VERTICAL
3	1	4590903	MGN 4 LIGHT, 3000W (4-750W 110VAC) WHT
4	1	4548201	O-RING, BUNA AS568A244
5	1	4267401	NSU VERTICAL ACCESSORY KIT (Not Shown)
6	1	901646	CARTON FOR RCP & LIGHTS (Not Shown)
7	1	WD-43437	Wiring Diagram (Not Shown)

UNLESS OTHERWISE SPECIFIED DIMENSIONS ARE IN INCHES.
 TOLERANCES ON DECIMALS ANGLES
 0 = ± 0.030 ± 1°
 00 = ± 0.020
 000 = ± 0.015

1. ALL INSIDE EDGES TO HAVE .005" TO .035" FILLETS.
 2. ALL OUTSIDE EDGES TO HAVE .005" TO .015" CHAMFER OR RADIUS.
 125 $\sqrt{\quad}$ ON ALL MACHINED SURFACES

PROPRIETARY AND CONFIDENTIAL
 THE INFORMATION CONTAINED IN THIS DRAWING IS THE SOLE PROPERTY OF THE WILL-BURT COMPANY ANY REPRODUCTION IN PART OR WHOLE WITHOUT THE WRITTEN PERMISSION OF THE WILL-BURT COMPANY IS PROHIBITED.

WILL-BURT AN EMPLOYEE OWNED COMPANY
 ORRVILLE, OH

TITLE
VRT 3000 4-750W MGN 120V

APPROVALS	DATE	SIZE	DWG NO	REV
DRAWN RCC	1/26/2015	B	720019013	00
CHECKED		PN:	720019013	SHEET 1 OF 1

APPROX. WT:86.3 lbmass
 THIRD ANGLE PROJECTION