

Photometric Report



General Information

Report No. RN-160330-5
Test date 2016-03-30
Operator mw Han
Temperature 22.6 °C
Test Name 160330_CTL-CPZ610_24V
Description

Sample Information

Measuring Distance 25.00 m
C (°) 0° ~ 350° / 10.0°
γ (°) 0° ~ 90° / 0.5°

Electric Properties

Voltage 24.00 V
Current 1.673 A

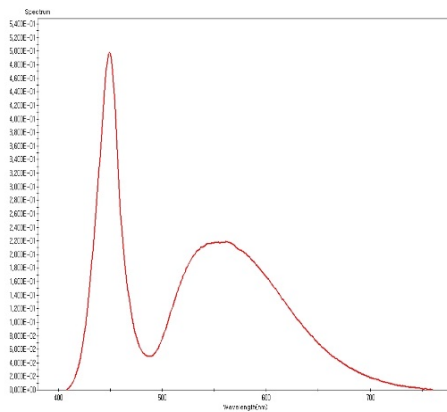
Photometric

Total Luminous Flux 1362.78 lm
Luminance Efficiency 33.94 lm/W
Max. Intensity 417490.04 cd

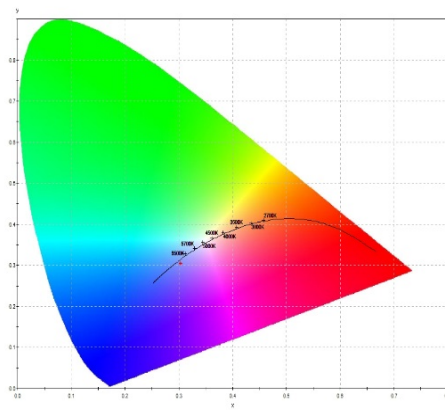
Colorimetric

x (CIE 1931) 0.3029
y (CIE 1931) 0.3043
Color Temperature 7431.8 k

Spectrum



Color Coordinate





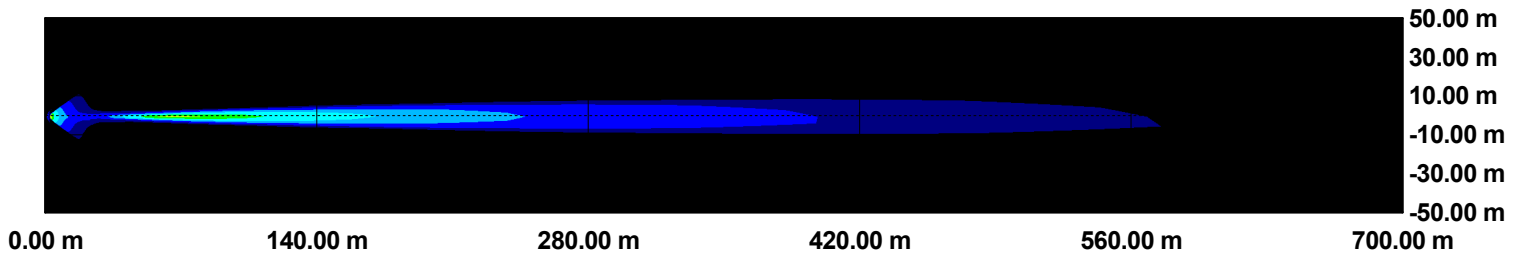
Report Number:

Report Date:

Part Name: 160330_CTL-CPZ610_24V
Part Number:
Model:

Customer:
Emax (Lux): 39.506
Coordinate: 2.873, -0.119

160330_CTL-CPZ610_24V



Illuminance Type: *Perpendicular*
Test Item Tilt Angle (?): 0.000

Test Item Height (m): 1.700
Test Item Offset from Road Centre (m): 0.600

Tested By: _____ Checked By: _____ Approved By: _____